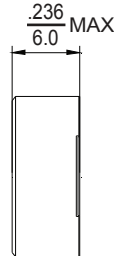
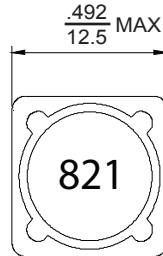


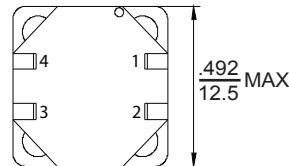


Dual Winding Choke

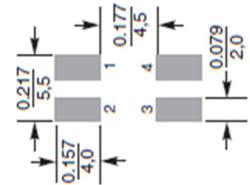
PCSDW125B



Dimensions: Inches
(mm)



Recommended Layout:



Allied Part Number	Inductance (μH) ±20%	Test Freq. KHz, 0.25V	DCR (mΩ) Max	Isat (A)	Marking
PCSDW125B-3R3M-RC	3.3	1	15	8.00	3R3
PCSDW125B-4R7M-RC	4.7	1	18	7.60	4R7
PCSDW125B-6R4M-RC	6.4	1	18	5.80	6R4
PCSDW125B-8R2M-RC	8.2	1	25	5.00	8R2
PCSDW125B-100M-RC	10	1	25	4.00	100
PCSDW125B-120M-RC	12	1	27	3.50	120
PCSDW125B-150M-RC	15	1	30	3.30	150
PCSDW125B-180M-RC	18	1	34	3.00	180
PCSDW125B-220M-RC	22	1	36	2.80	220
PCSDW125B-270M-RC	27	1	51	2.30	270
PCSDW125B-330M-RC	33	1	57	2.10	330
PCSDW125B-390M-RC	39	1	68	2.00	390
PCSDW125B-470M-RC	47	1	75	1.80	470
PCSDW125B-560M-RC	56	1	110	1.70	560
PCSDW125B-680M-RC	68	1	120	1.50	680
PCSDW125B-820M-RC	82	1	140	1.40	820
PCSDW125B-101M-RC	100	1	160	1.30	101
PCSDW125B-121M-RC	120	1	170	1.10	121
PCSDW125B-151M-RC	150	1	230	1.00	151
PCSDW125B-181M-RC	180	1	290	0.90	181
PCSDW125B-221M-RC	220	1	400	0.80	221
PCSDW125B-271M-RC	270	1	460	0.75	271
PCSDW125B-331M-RC	330	1	510	0.68	331
PCSDW125B-391M-RC	390	1	690	0.65	391
PCSDW125B-471M-RC	470	1	770	0.58	471
PCSDW125B-561M-RC	560	1	860	0.54	561
PCSDW125B-681M-RC	680	1	1200	0.48	681
PCSDW125B-821M-RC	820	1	1340	0.43	821
PCSDW125B-102M-RC	1000	1	1530	0.40	102

Features

- SMD Coupled Inductor
- Can also be used as a common mode choke or two single Inductors
- Ideal for use in Flyback and other applications.

Electrical

Inductance Range: 3.3μH - 1000μH

Tolerance: 20% over entire range, some values available in tighter tolerances

Operating Temp: -40°C to +105°C

Isat: Inductance drop of 35% from value without current.

Resistance to Soldering Heat

Pre-Heat 150°C, 1 Min.

Solder Composition: Sn/Ag3.0/Cu0.5

Solder Temp: 260±5°C for 10 sec ±1 sec.

Test Equipment

(L): HP 4284A, HP4285A

(RDC): CHEN HWA 502

(Isat Current): HP4284+HP42841A

(Irms Current): HP4284A+HP42841A

Physical

Packaging: 600 pieces per 13 inch reel.

Marking: EIA Inductance Code.

All specifications subject to change without notice.

Schematic

